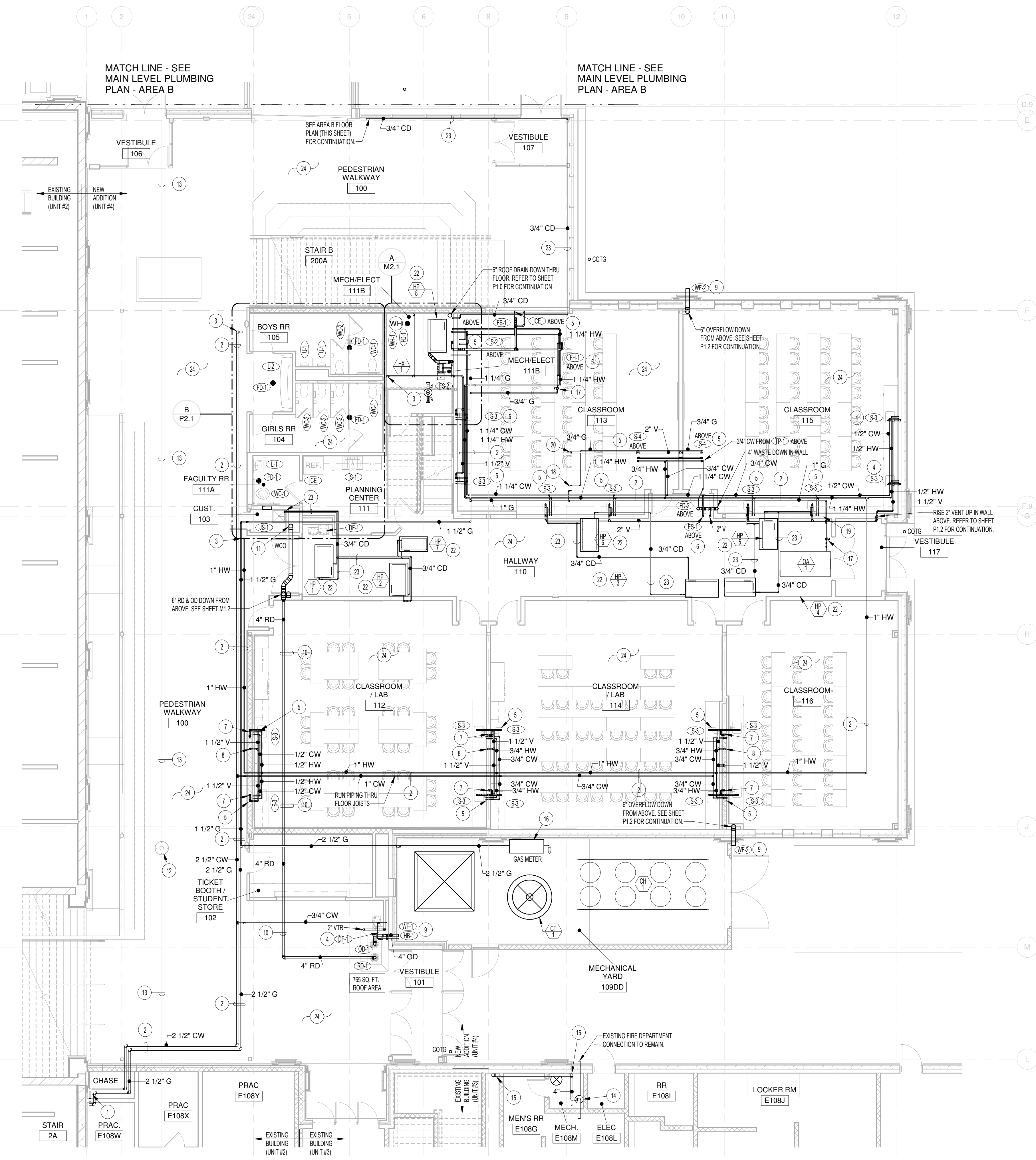
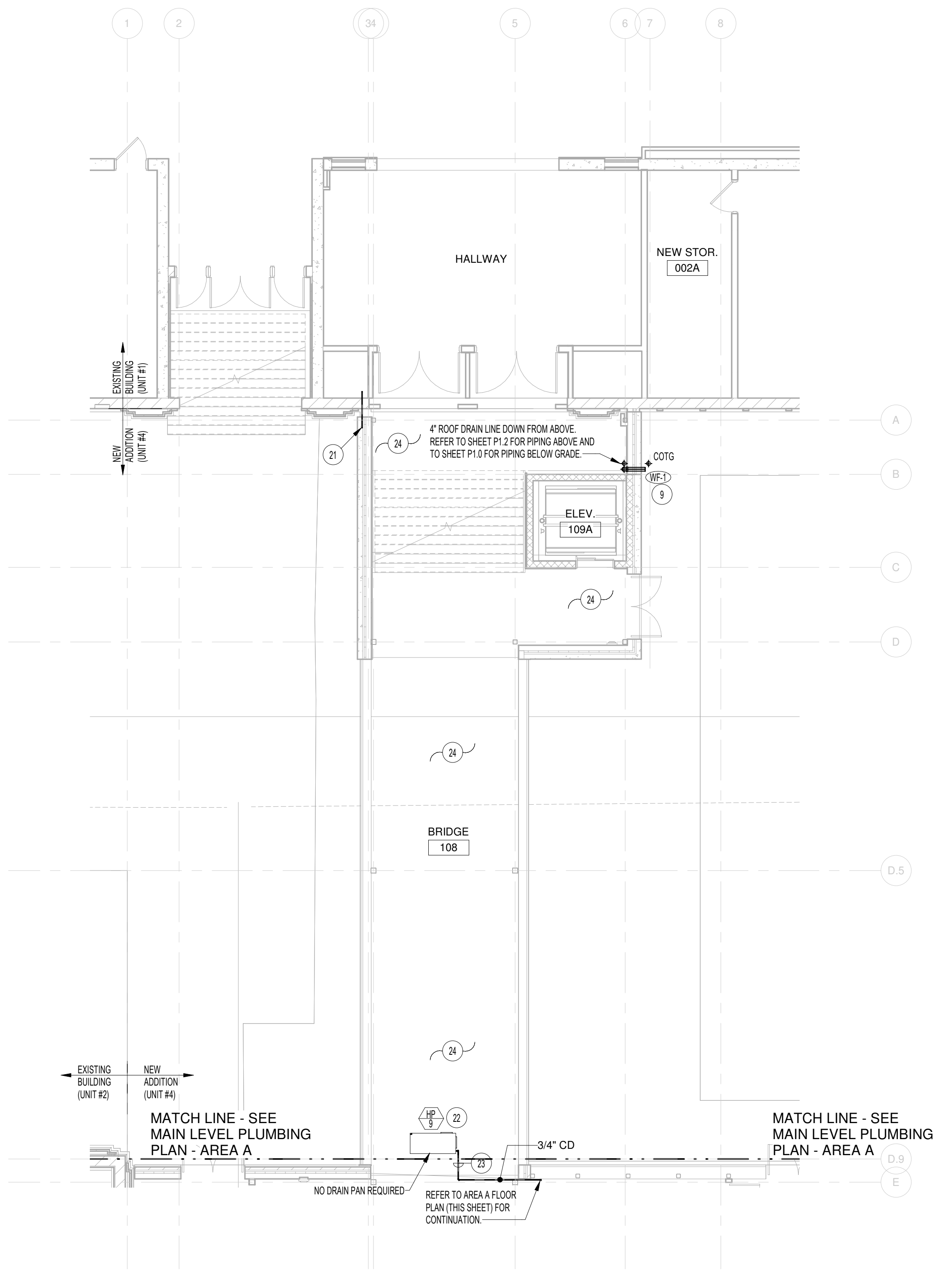


PLAN NOTES:

- 1 NEW 2-1/2" GAS LINE (2 PSI) AND NEW 2-1/2" COLD WATER LINE UP FROM BASEMENT MECHANICAL ROOM. RISE PIPING UP IN EXISTING CHASE AND EXTEND OUT BELOW UPPER LEVEL FLOOR. KEEP PIPING AS HIGH AS POSSIBLE ON MAIN LEVEL AND RUN AS SHOWN. REFER TO LARGE SCALE MECHANICAL ROOM ON SHEET M2.1 FOR CONTINUATION OF PIPING BELOW CHASE.
- 2 RUN PIPING ABOVE CEILING AS SHOWN. WHERE THERE ARE NO CEILING, RISE PIPING UP AND RUN THRU JOIST SPACE. COORDINATE PIPING WITH DUCTWORK, BUILDING STRUCTURE, AND OTHER PIPING.
- 3 REFER TO LARGE SCALE PLANS ON SHEET P2.1 FOR CONTINUATION OF PIPING IN TOILET ROOM AREA.
- 4 REFER TO DETAIL EP3.1 FOR PLUMBING FIXTURES MOUNTED ON EXTERIOR WALL. WASTE, WATER AND VENT PIPING TO BE KEPT INSIDE WARM BUILDING ENVELOPE.
- 5 DROP 1/2" HOT AND COLD WATER LINES DOWN IN WALL FOR FIXTURES LOCATED ON MAIN LEVEL. RISE 2" HOT AND COLD WATER LINES UP IN WALL FOR FIXTURES LOCATED ON UPPER LEVEL. REFER TO SHEET P1.2 FOR UPPER LEVEL FIXTURES.
- 6 RISE 1-1/4" COLD WATER LINE UP THRU FLOOR AND CONNECT TO EMERGENCY SHOWER AND EYEWASH STATION. REFER TO SHEET P1.2 FOR FIXTURES LOCATION AND TO DETAIL DP3.1 FOR TYPICAL PIPING CONNECTIONS.
- 7 RISE 1-1/2" WASTE LINE UP THRU FLOOR FOR FIXTURES ON UPPER LEVEL. OFFSET WASTE PIPING AS REQUIRED FOR BUILDING STRUCTURE. REFER TO SHEET P1.2 FOR UPPER LEVEL FIXTURES.
- 8 RISE 2" VENT FROM MAIN LEVEL FIXTURES UP IN WALL ABOVE. OFFSET VENT AS REQUIRED FOR BUILDING STRUCTURE. REFER TO SHEET P1.2 FOR CONTINUATION OF VENT PIPING TO NEAREST VTS.
- 9 DROP OVER FLOOR PIPING DOWN IN CHASE. EXTEND THRU EXTERIOR WALL AT 1/2" ABOVE GRADE WITH WALL FLANGE. DO NOT LOCATE WALL FLANGE DIRECTLY OVER EQUIPMENT OR OTHER WATER SENSITIVE ITEMS.
- 10 RUN ROOF DRAIN AND OVERFLOW PIPING THRU JOISTS. KEEP PIPING AS HIGH AS POSSIBLE AND GRADE AT 1/4" PER FOOT. COORDINATE WITH BUILDING STRUCTURE, OTHER PIPING, AND DUCTWORK.
- 11 DROP 6" ROOF DRAIN LINE DOWN IN CHASE. REFER TO SHEET P1.0 FOR CONTINUATION.
- 12 EXISTING MANHOLE COVER AND CONE TO BE REMOVED BY SITE CONTRACTOR. PLUMBING AND MECHANICAL CONTRACTORS TO COORDINATE CORRESPONDING DISCIPLINES WITH EXISTING MANHOLE REMAINING. REFER TO SITE PLAN ON SHEET C1.04.
- 13 EXISTING 8" SEWER MAIN (APPROXIMATELY 15' DEEP) BELOW GRADE TO REMAIN. PROTECT DURING CONSTRUCTION. REFER TO SHEET C1.04 FOR MODIFICATIONS TO EXISTING MANHOLE.
- 14 EXISTING FIRE RISER AND ALARM VALVE TO REMAIN. PROTECT DURING CONSTRUCTION. CONNECT NEW 4" LINE TO EXISTING 4" LINE FOR NEW ADDITION. CONTRACTOR TO FIELD VERIFY EXISTING CONDITIONS.
- 15 RISE NEW 4" FIRE SPRINKLER LINE UP THRU FLOOR ABOVE. RISE UP IN EXISTING CHASE TO ABOVE UPPER LEVEL CEILING. ROUTE NEW PIPING TO NEW ADDITION. REFER TO SPECIFICATIONS.
- 16 LOCAL GAS COMPANY TO RE-LOCATE OR REPLACE EXISTING GAS METER IN NEW CHILLER COMPOUND AND RECONNECT TO SERVICE MAIN FROM STREET. COORDINATE METER LOCATION WITH OTHER EQUIPMENT AND PIPING IN THE COMPOUND. METER TO HAVE 5,000,000 BTU CAPACITY WITH 2 PSI DISCHARGE PRESSURE.
- 17 PLUMBING CONTRACTOR TO TOUCH-IN AND CONNECT NEW 3/4" GAS LINE COMPLETE WITH PRESSURE REGULATOR, SHUT-OFF VALVE AND FLEXIBLE HOSE TO FIXTURES AND/OR EQUIPMENT. REFER TO DETAIL WP3.1 FOR TYPICAL INSTALLATION.
- 18 RISE 3/4" (2 PSI) GAS LINE UP IN WALL TO PRESSURE REGULATOR AND EMERGENCY SHUT-OFF VALVE. REFER TO SHEET P1.2 FOR VALVE LOCATION AND TO DETAIL JP3.1 FOR TYPICAL INSTALLATION.
- 19 RISE 3/4" (2 PSI) GAS LINE UP IN WALL ABOVE. REFER TO SHEET P1.2 FOR CONTINUATION OF PIPING.
- 20 RISE 2" VENT UP IN WALL ABOVE. REFER TO SHEET P1.2 FOR CONTINUATION.
- 21 DISCONNECT EXISTING EXTERIOR HOSE BIBB IN CRAWL SPACE OF EXISTING SCHOOL. CAP PIPING IN CRAWL SPACE AND REMOVE EXISTING PIPING THRU WALL. REFER TO ARCHITECTURAL DRAWINGS FOR PATCHING OF WALLS.
- 22 WATER SOURCE HEAT PUMP PROVIDED AND INSTALLED BY MECHANICAL CONTRACTOR. PLUMBING CONTRACTOR TO PROVIDE AND CONNECT 3/4" CONDENSATE DRAIN LINE TO UNIT AND SEPARATE 3/4" DRAIN LINE TO SHEET METAL DRAIN PAN.
- 23 KEEP DRAIN PIPING AS HIGH AS POSSIBLE. SLOPE DRAIN LINES AT 1/4" PER FOOT AND RUN TO NEAREST SINK OR FLOOR DRAIN AS SHOWN. FOR DRAINS CONNECTING TO SINK, DROP PIPING DOWN IN WALL. EXTEND OUT BELOW CROWN AND CONNECT TO P-TRAP WITH DISHWASHER TYPE FITTING. REFER TO DETAIL AP3.2 FOR TYPICAL CONNECTION.
- 24 ENTIRE ADDITION TO BE FIRE SPRINKLED. LOCATE HEADS AND PIPING AS REQUIRED THROUGHOUT BOTH LEVELS OF NEW ADDITION TO MEET NFPA 13 CODE REQUIREMENTS. CONTRACTOR TO TAP ONTO EXISTING FIRE RISER AND ALARM VALVE LOCATED ON MAIN LEVEL OF UNIT #5 (BYM BUILDING).



FIRST FLOOR PLUMBING PLAN - AREA A
SCALE: 1/8" = 1'-0"



FIRST FLOOR PLUMBING PLAN - AREA B
SCALE: 1/8" = 1'-0"

BID SET - 01/24/2020

HUMMEL
a: 2785 North Bogus Basin Road
Boise, Idaho 83702
p: (208)343.7523
f: (208)343.0940

Project:
POCATELLO HIGH SCHOOL - ADDITION & RENO.

325 N ARTHUR AVE
POCATELLO, ID 83204

Sheet:
FIRST FLOOR PLUMBING PLAN - AREAS A AND B

Revisions: 1

Engineered Systems Associates
1355 EAST CENTER
POCATELLO, IDAHO 83201
PHONE: (208) 233-0501
FAX: (208) 233-0529
EMAIL: esa@engsystems.com
ESA JOB NUMBER: 18075

Project No: POCATELLO IDAHO 83201
Project Number: M Jensen
Drawn By: D Sudweeks
Checked By: D Sudweeks
Date: 01/24/2020
Sheet No: **P1.1**